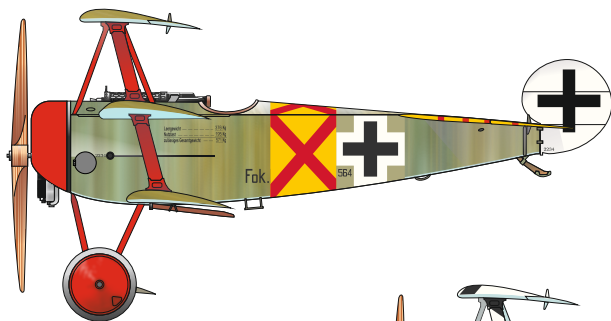


SCALE
1/24

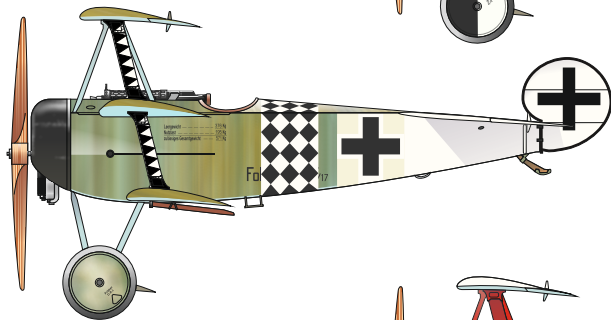
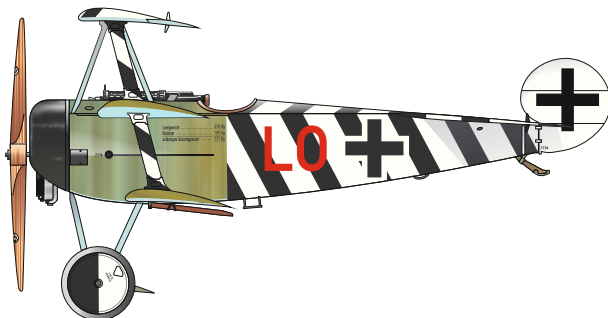
FLYING CIRCUS / JG I

ITEM #
D24001



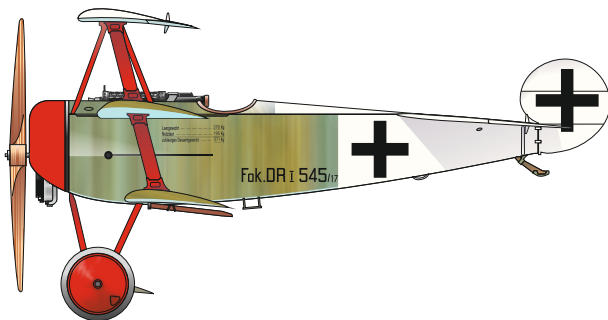
Fokker Dr.I, 564/17, flown by
Lt. Werner Steinhäuser, Jasta 11,
Cappy, France, December 1917

Fokker Dr.I, 586/17, flown by
Lt. Ernst Udet, CO of Jasta 4,
„La Ferme Puisieux” Airfield
near Laon, France, May 1918



Fokker Dr.I, flown by
Lt. Hans Körner, Jasta 2, Halluin-Ost,
France, May 1918

Fokker Dr.I, 545/17, flown by
Lt. Hans Weiss, CO of Jasta 11,
Cappy, France, April 1918



DESIGNED EXCLUSIVELY FOR FOKKER DR.I BY MENG

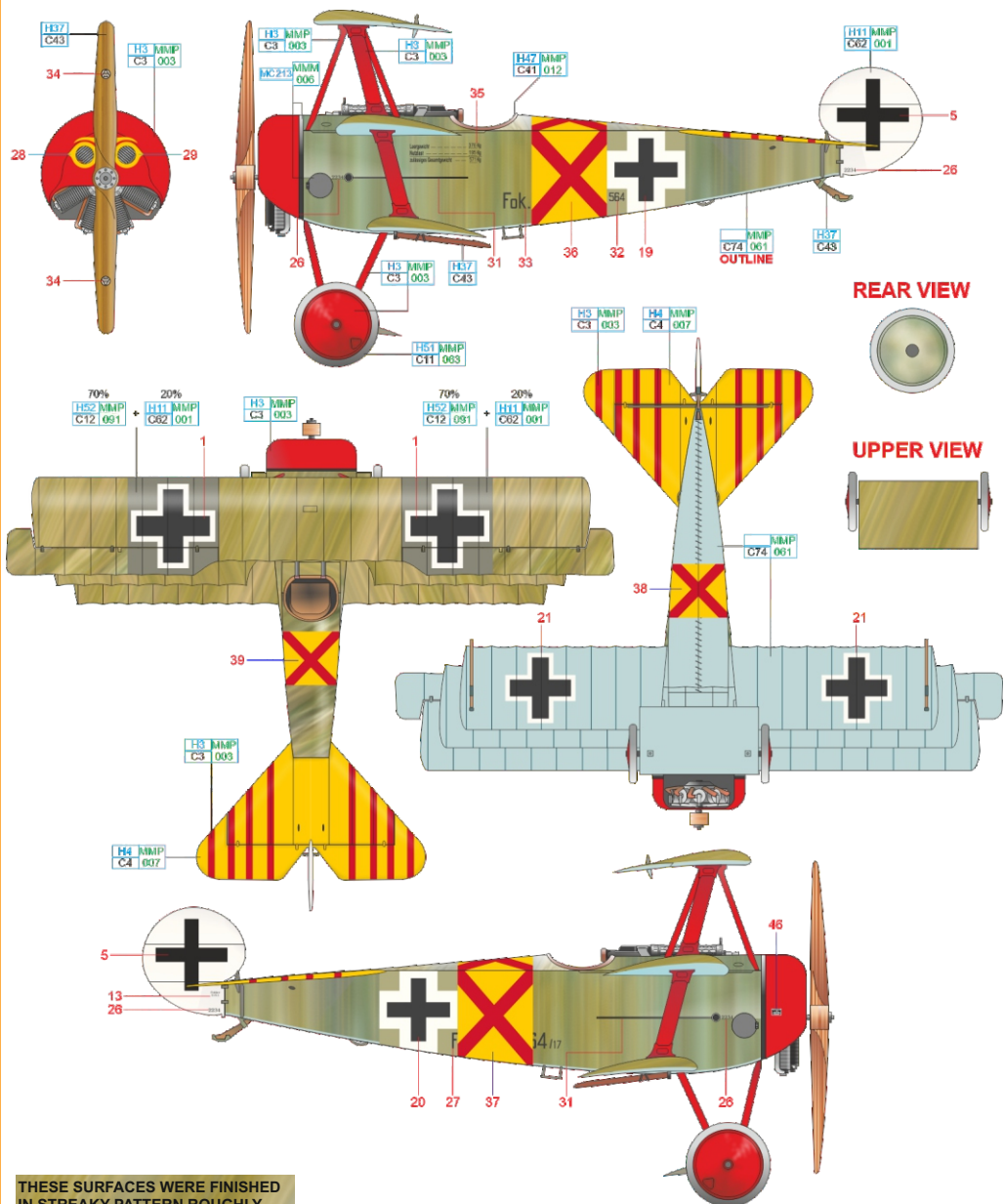


Eduard - Model Accessories, 435 21 Obrnice 170,
Czech Republic

WWW.EDUARD.COM

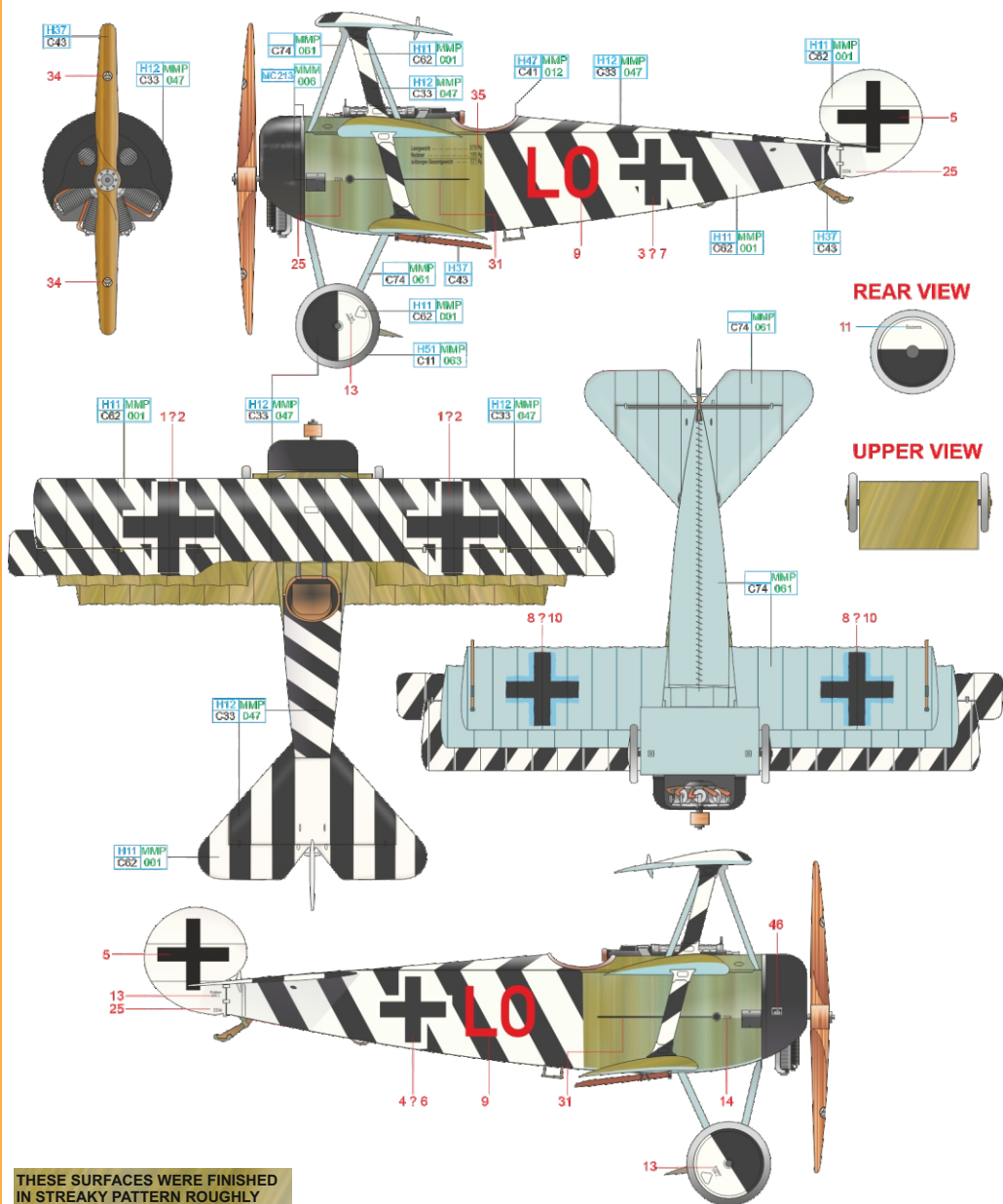
D24001 Flying circus / JG I 1/24





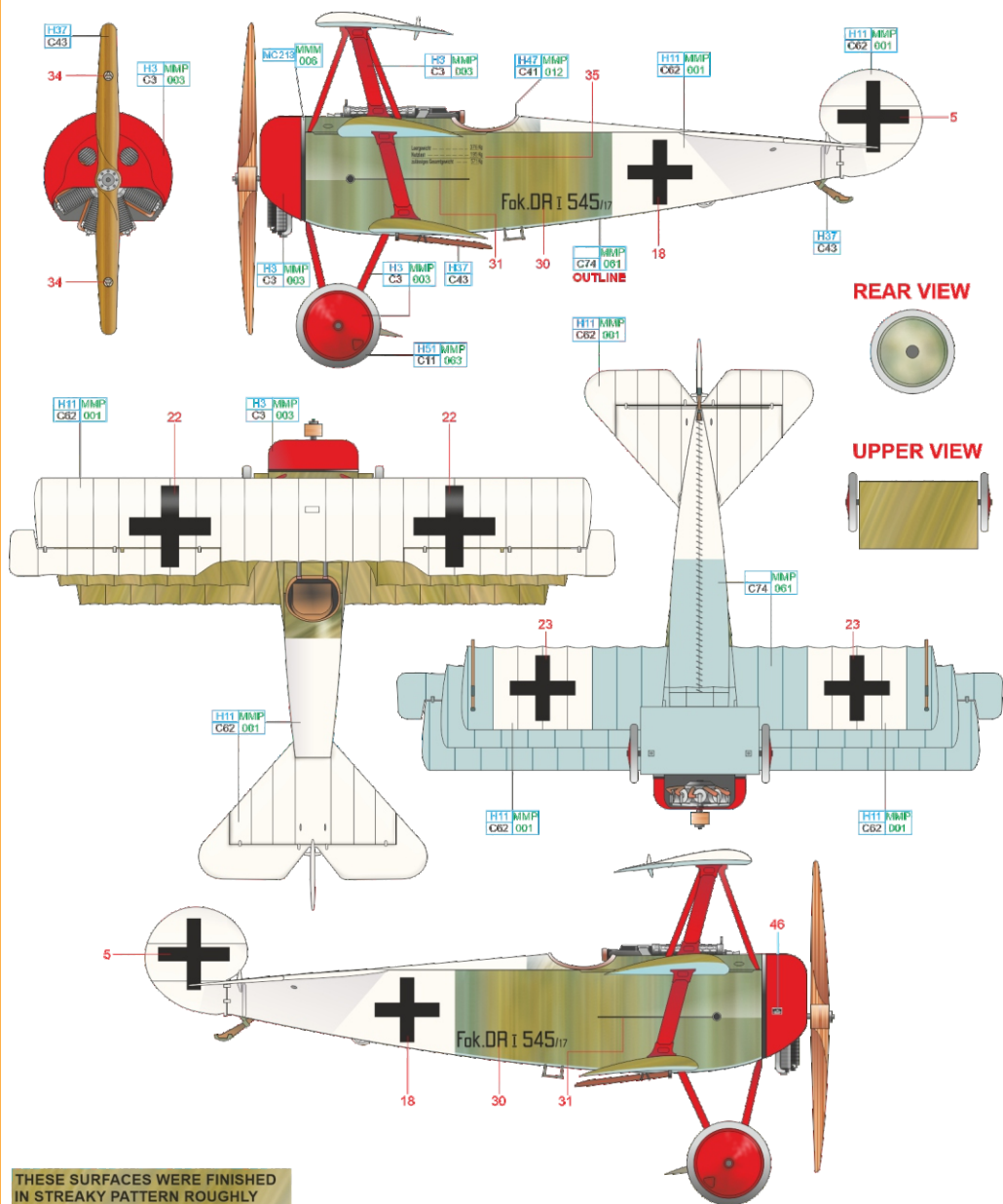
THESE SURFACES WERE FINISHED IN STREAKY PATTERN ROUGHLY BRUSHED OVER THE NATURAL LINEN COVER. FOUR MAIN PIGMENTS WERE USED: VERY DARK BROWN, VIOLET, LIGHTENED AZURE BLUE AND MEDIUM GREEN

RED	H3 MMP C3 003	YELLOW	H4 MMP C4 007	OLIVE DRAB	H52 MMP C12 092	LIGHT BLUE	MMP C74 061
WHITE	H11 MMP C62 001	GRAY	H51 MMP C11 063	RED BROWN	H47 MMP C41 012	BROWN	H37 C43
							MC213 MMP 006



THESE SURFACES WERE FINISHED IN STREAKY PATTERN ROUGHLY BRUSHED OVER THE NATURAL LINEN COVER. FOUR MAIN PIGMENTS WERE USED: VERY DARK BROWN, VIOLET, LIGHTENED AZURE BLUE AND MEDIUM GREEN

BLACK	H12 MMP C33 047	LIGHT BLUE	MMP C74 081	STEEL	MC213 MM 006
WHITE	H11 MMP C62 001	LIGHT GULL GRAY	H51 MMP C11 063	RED BROWN	H47 MMP C41 012
				WOOD BROWN	H37 C43

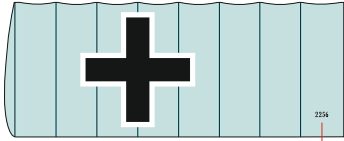


THESE SURFACES WERE FINISHED IN STREAKY PATTERN ROUGHLY BRUSHED OVER THE NATURAL LINEN COVER. FOUR MAIN PIGMENTS WERE USED: VERY DARK BROWN, VIOLET, LIGHTENED AZURE BLUE AND MEDIUM GREEN

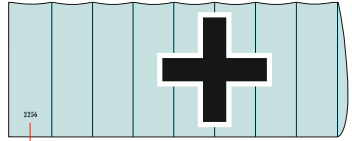
LIGHT BLUE	MIMP C74 081	RED	H3 MIMP C3 003	STEEL	MC213 MIMP 006
WHITE	H11 MIMP C62 001	LIGHT GULL GRAY	H51 MIMP C11 063	RED BROWN	H47 MIMP C41 012
				WOOD BROWN	H37 C43

25 Fokker Dr.I of Lt. Ernst Udet

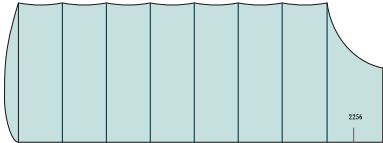
26 Fokker Dr.I of Lt. Werner Steinhäuser



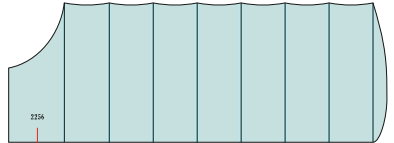
25?26



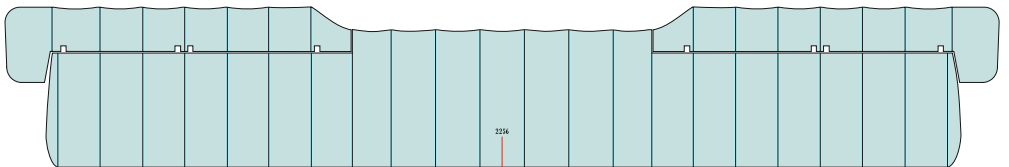
25?26



25?26



25?26



25?26