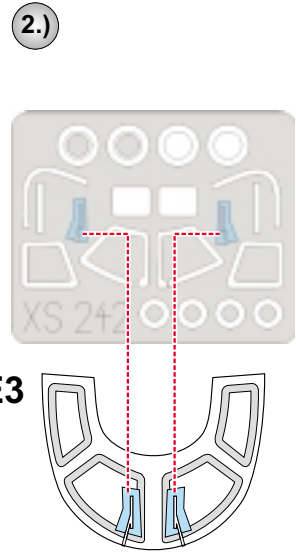
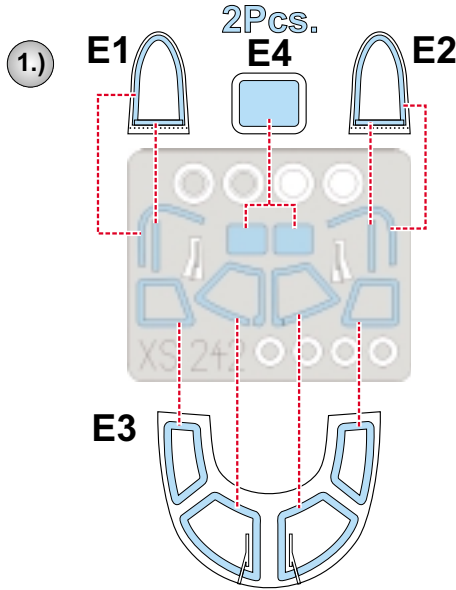
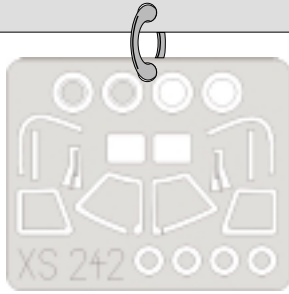


**eduard**  
**Express Mask**

# MU-2

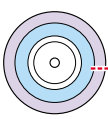
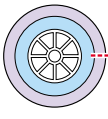
The die-cut mask for accurate canopy frame painting of the  
*Hasegawa 1/72 KIT*

**XS 242**



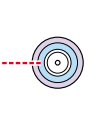
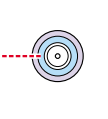
LIQUID MASK ■

2Pcs. **C3**



2Pcs. **C3**

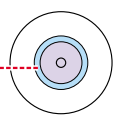
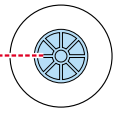
2Pcs. **C6**



2Pcs. **C6**



2Pcs. **C3**



2Pcs. **C3**

3.)



**INTERIOR COLOR**

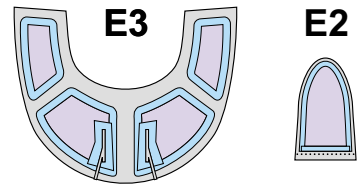
4.)



**CAMOUFLAGE COLOR**

5.)

**REMOVE MASK**



LIQUID MASK ■

